



Chesapeake, Virginia, USA

Service Center

Our service center features the latest technology and manufacturing skills to repair and rebuild your centrifugal compressors, reciprocating compressors, steam turbines, expanders, pumps and rotary compressors whether it's Dresser-Rand or other nameplate equipment.

With more than two dozen world-class service centers and several satellite offices strategically located throughout the world, including two service centers dedicated to U.S. Navy work, Dresser-Rand's dedicated service center staff is ready to provide responsive, reliable support for your rotating equipment. We recognize the importance of your equipment and work closely with you to minimize cost and downtime.

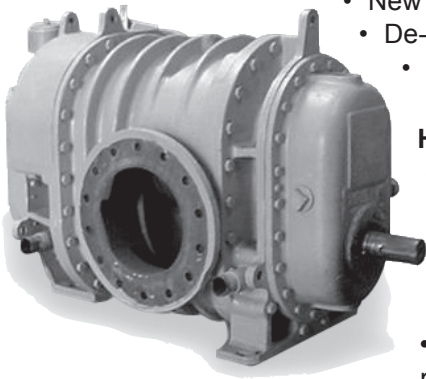
Dresser-Rand Chesapeake Virginia Service Center

The Chesapeake, Virginia, Service Center is dedicated to U.S. Navy work for the Atlantic Fleet. The Chesapeake Service Center maintains 43,000 square feet of shop space and 4,000 square feet of office space. The business at this location consists primarily of equipment overhauls, repairs, maintenance, upgrades and assessments of U.S. Navy shipboard machinery.

We service the following equipment:

Spiraxial Compressors

- New equipment manufacturing with full-performance testing
- De-ballast compressors and low-pressure blowers
- Parts



H.P. & L.P. Air Compressors (reciprocating, rotary, and centrifugal)

- Dresser-Rand nameplate (formerly Ingersoll-Rand and Worthington)

Auxiliary Steam Turbines

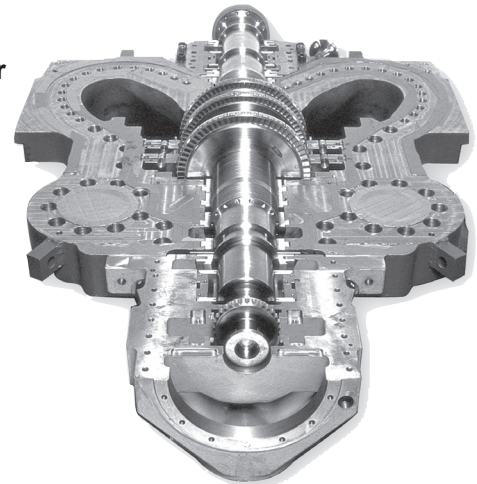
- Formerly Terry, Whitton, Moore, Clark, Turbodyne and Worthington nameplates

Propulsion and Ship Service Turbine Generator Steam Turbines

- Formerly General Electric Navy Propulsion and SSTG turbines

Commercial Air Compressors (parts and engineered support):

- AXI
- CAP
- ISOPAC



Chesapeake, Virginia, USA

Service Center

Dresser-Rand
1101 Cavalier Boulevard
Chesapeake, VA 23323
Tel: 757-494-3800
Fax: 757-487-9450

Chula Vista, California, USA

Service Center

1675 Brandywine Ave
Suite F
Chula Vista, CA 91911 USA
Phone: 619-656-4740
Fax: 619-656-4819

For a complete listing of products and services, visit

www.dresser-rand.com

or contact one of the following Dresser-Rand locations:

Dresser-Rand Corporate Headquarters

West8 Tower Suite 1000
10205 Westheimer Road
Houston, TX 77042 USA
Tel: +1 713-354-6100
Fax: +1 713-354-6110
email: info@dresser-rand.com

Regional Headquarters

The Americas

Dresser-Rand
West8 Tower Suite 1000
10205 Westheimer Road
Houston, TX 77042 USA
Tel: +1 713-354-6100
Fax: +1 713-354-6110

Service Agreements

Dresser-Rand's service center meets the requirements of NAVSEA STD Work Item 009-90 and is the OEM-authorized service facility for the following U.S. Navy products:

- Carver® Pumps
- Curtiss-Wright Engineered Pump Division
 - Worthington
 - Ingersoll Rand
 - Dresser
 - Pacific Pumps
- Hellan Fluid Strainers and Hose Reels

Safety



Safety is a top priority for Dresser-Rand. We are proactive in preventing incidents that can result in injury, property damage, or be detrimental to the environment.

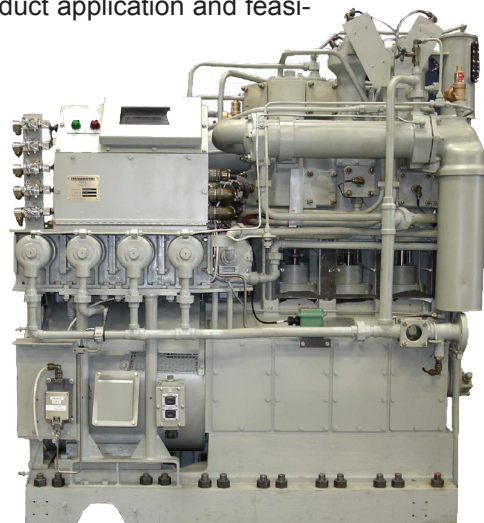
Quality

Our service center is ISO 9001 certified and is a factory-authorized service center for Dresser-Rand, GE Marine steam turbines, Clark, Ingersoll-Rand, Roots, Worthington, Turbodyne, Terry, Moore and Whitton nameplate equipment for nuclear plants.

Regional Expertise (Sales, Field Service, Technical Support)

Whether your nameplate identifies Dresser-Rand or another manufacturer, our integrated field service teams can help you develop cost-effective, field-proven solutions for repairs, overhauls, upgrades, revamps, rerates, remanufacture and nearly any other challenge involving rotating equipment and related control systems. Our field service team is supported by an extensive technical support network consisting of research and development teams, equipment design engineers and aerodynamic performance engineers who are available to help you conduct application and feasibility studies for complex projects.

The Chesapeake Service Center has field service representatives, mechanics and millwrights available 24 hours a day with fully equipped service vehicles that enable rapid response to meet your service requirements.



©2007 Dresser-Rand Company. Printed in U.S.A.

This document comprises a general overview of the products described herein. It is solely for informational purposes, does not represent a warranty or guarantee of the information contained herein and is not to be construed as an offer to sell or a solicitation to buy. Contact Dresser-Rand Company for detailed design and engineering information suitable to your specific applications. Dresser-Rand Company reserves the right to modify its products and related product information at any time without prior notice.

Form 2137



DRESSER-RAND