

HSE

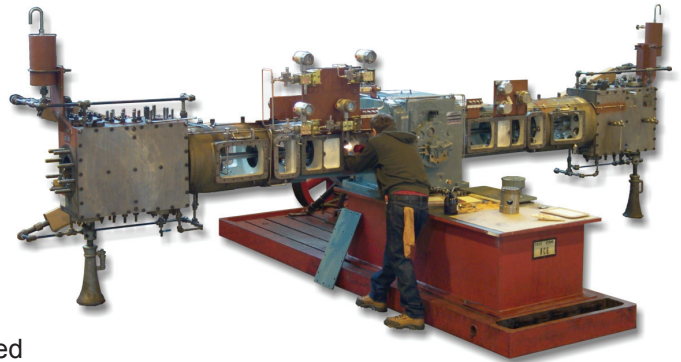
Reciprocating Process Compressor

The Dresser-Rand HSE reciprocating process compressor provides a reliable solution where full-time, medium-volume service is a requirement. Its proven performance, balanced design, and wide range of cylinder selections make the HSE an excellent choice for long-term process gas service.

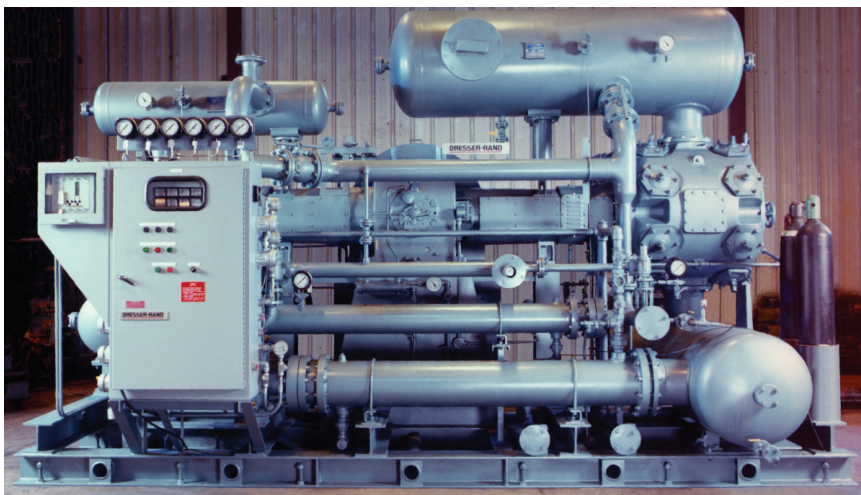
A Reliable Performer

The Dresser-Rand HSE is a horizontal, balance-opposed, two-throw, reciprocating compressor designed for long-term process gas service. Designed to API-618 specifications, the HSE is available in either a 9- or 11-inch stroke and can handle rod loads (MACCRL) of 27,600 lbs. (122.8 kN) and gas loads (MACGL) of 31,000 lbs. (137.9 kN). With the ability to handle a variety of drivers with either direct or V-belt connections, the HSE can be fitted with either lubricated or non-lubricated cylinders from 2.125 to 28 inches (54 to 711 mm) in bore diameter.

Much like all the Dresser-Rand reciprocating process compressors, the HSE is engineered to our highest standards, ensuring long-lasting reliability. Sized to provide a reliable solution where requirements demand full-time performance in medium volume service, the HSE offers an alternative to larger, more costly compressors or shorter stroke, high-speed compressors.



Final assembly of HSE equipped with Thermosyphen Cooling System.



Skid-mounted HSE package with control panel, dampeners, and cooling system.

Designed and Built with Precision

With its fine-grain, cast iron frame, the HSE is engineered to provide maximum support for the running gear and related components. The rigid frame design minimizes vibration and provides for low moments and minimal foundation requirements. Forged from high tensile strength steel alloy, the crankshaft is fully stress-relieved and heat-treated. The bearing journals and crankpin are ground with precision and polished to meet exacting tolerances.

Rugged, precision-machined aluminum main and crankpin bearings are generously sized

DRESSER-RAND

For more information on **HSE compressors**, contact one of the following Dresser-Rand locations.

Dresser-Rand Reciprocating Operations
 100 Chemung Street
 Painted Post, NY 14870 USA
 Tel: (Int'l + 1) 607-937-2011
 Fax: (Int'l + 1) 607-937-2905

Dresser-Rand Company Ltd
 85 Papyrus Road,
 Peterborough, PE4 5HG, UK
 Tel: (Int'l +44) 1733 292200
 Fax: (Int'l +44) 1733 292300

For a complete listing of products and services, visit us on the internet at www.dresser-rand.com or contact one of the following Dresser-Rand locations.

Dresser-Rand Corporate Headquarters

West8 Tower Suite 1000
 10205 Westheimer Road
 Houston, TX 77042 USA
 Tel: (Int'l +1) 713-354-6100
 Fax: (Int'l +1) 713-354-6110

112, Avenue Kleber
 75784 – Paris Cedex 16
 Tel: (Int'l +33) 156 26 71 71
 Fax: (Int'l +33) 156 26 71 72

email: info@dresser-rand.com

Regional Headquarters

The Americas

Dresser-Rand
 West8 Tower Suite 1000
 10205 Westheimer Road
 Houston, TX 77042 USA
 Tel: (Int'l +1) 713-354-6100
 Fax: (Int'l +1) 713-354-6110

EMEA

(Europe, Middle East & Africa)
 Dresser-Rand S.A.
 31 Boulevard Winston Churchill
 Cedex 7013
 Le Havre 76080 France
 Tel: (Int'l +33) 2-35-25-5225
 Fax: (Int'l +33) 2-35-25-5366 / 5367

Asia-Pacific

Dresser-Rand Asia Pacific Sdn Bhd
 Unit 9-4, 9th Floor
 Bangunan Malaysian Re
 17 Lorong Dungun, Damansara Heights
 50490 Kuala Lumpur, Malaysia
 Tel: (Int'l +60) 3-2093-6633
 Fax: (Int'l +60) 3-2093-2622

©2009 Dresser-Rand.

for best run-in and long-lasting service. All bearings are force-lubricated to API-618 specifications. Connecting rods are die-forged steel with rifle-drilled passages for positive lubrication of the crosshead pin and bushing. The standard crossheads are nodular iron, equipped with adjustable aluminum shoes at both the top and bottom. Cast steel crossheads are also available.

Outstanding Cylinder Design and Selection

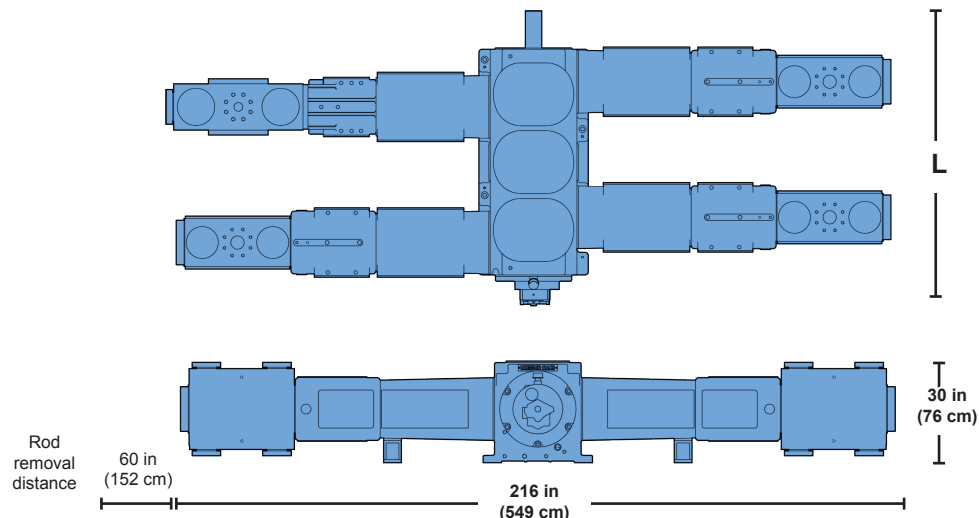
With experience in a variety of services, Dresser-Rand cylinders provide outstanding reliability. Our engineering expertise ensures that each cylinder provides maximum performance and reliability with minimum maintenance cost. Cylinder materials include cast iron, nodular iron, cast steel, fabricated carbon steel, fabricated stainless steel, and forged steel. Most cylinders are available for either lubricated or non-lubricated service.

Operational Specifications

MACCRL	27,600 lbs. (122.8 kN)
MACGL	31,000 lbs. (137.9 kN)
Maximum HP	1,000 (746 kW)
Standard Strokes	9 or 11 inch (229 or 279 mm)
Crankshaft Diameter	5 inches (127 mm)
Main Bearing Length	5.31 inches (135 mm)
Piston Rod Diameter	2 inches (51 mm)
Number of Throws	2 or 4
Cylinder Bore Range	2.125 to 28 inches (54 to 711 mm)

Materials

Frame	Cast Iron
Crankshaft	Forged Steel
Connecting Rod	Forged Steel
Crosshead	Nodular Iron (cast steel optional)
Main Bearing	Aluminum
Crankpin Bearing	Aluminum
Connecting Rod Pin Bushing	Bronze
Crosshead Pin	Steel Alloy



Dimensions

Dimensions provided are typical, and are basis API Type B distance pieces. For API Types C & D distance pieces, add 20 inches (51 cm) to the width dimension, and 10 inches (25 cm) to the rod removal distance.

HSE Typical Dimensions Typical Length (L) Dimensions

2-throw units: 48 inches (122 cm)
 4-throw units: 90 inches (229 cm)

This document comprises a general overview of the products described herein. It is solely for informational purposes, does not represent a warranty or guarantee of the information contained herein and is not to be construed as an offer to sell or a solicitation to buy. Contact Dresser-Rand for detailed design and engineering information suitable to your specific applications. Dresser-Rand reserves the right to modify its products and related product information at any time without prior notice.

