

RLHA

Single-Stage Steam Turbine

The API 611 compliant RLHA is a sturdy, versatile mechanical drive steam turbine for applications up to 2,500 HP (1,865kW). It's routinely specified by refineries, petrochemical plants, sugar mills, food processing and other industries using steam for process to drive lube oil pumps, feed water pumps, process pumps, fans, compressors, and generators.

Axial Split Casing

The axial split construction of the RLHA steam turbine allows the upper half of the casing to be removed for easy access to internal components for inspection and maintenance. The bearings can be inspected and replaced independent of each other and without removing the casing cover.

Overspeed Trip System

The overspeed trip actuating mechanism is a bolt-type, spring-restrained weight, positioned on the turbine shaft. At a pre-selected speed the bolt is released to unlatch the overspeed trip valve and completely stop the turbine.

The overspeed trip valve is a force-actuated, single-seated, piloted positive shutoff independent of the governor valve. It's designed to minimize pressure drop in the open position and to instantly shut off steam when tripped by the overspeed trip mechanism, optional electronic trip actuators or manually. The valve can be manually reset against full-line pressure.

Governing Systems

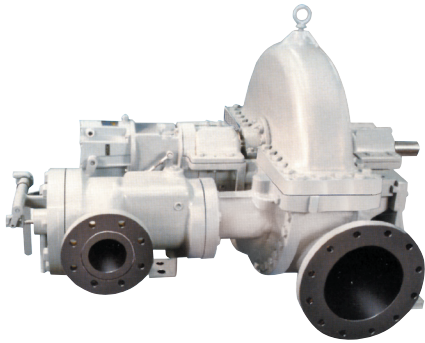
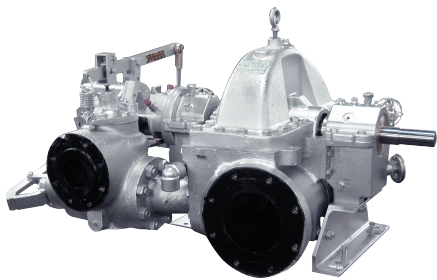
The Woodward TG series constant speed oil relay governor is standard equipment for RLHA steam turbines. Alternate governing systems are supplied when required for some operating conditions or when specified by the client.

Rotors, Bearings, Sealing Glands

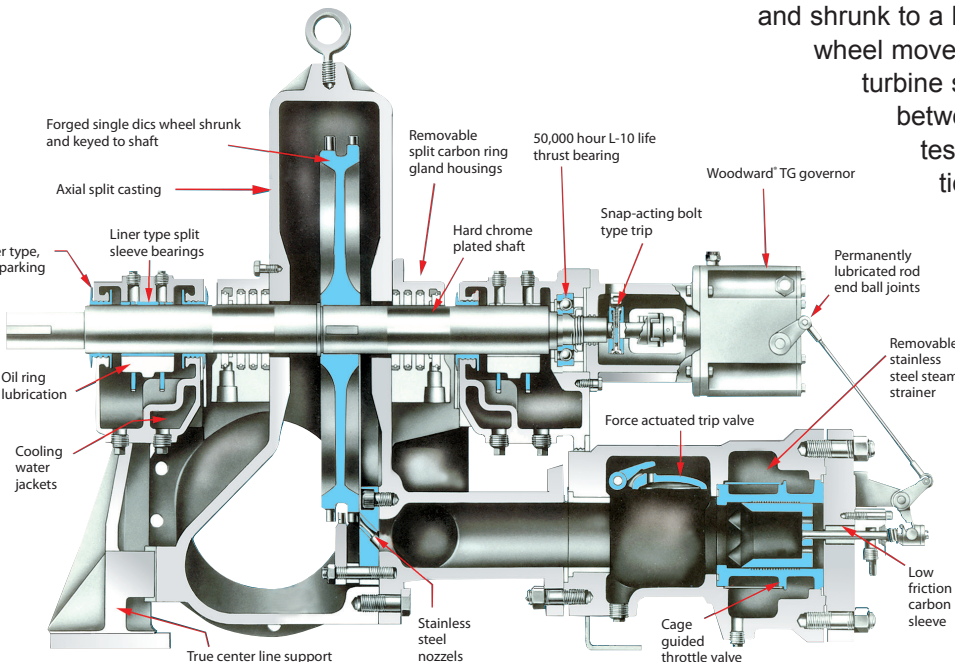
Single-disc, two-row Curtis impulse-type wheels, shouldered, keyed and shrunk to a large diameter 4140HT steel shaft, prevent wheel movement relative to the shaft throughout the turbine speed range. Turbine wheels are located between the bearings; balancing and vibration testing are in compliance with the dynamics section of API 611.

Radial bearings and housings are split at the horizontal centerline for easy access and replacement. Snap-in, liner-type sleeve bearings are steel backed, tin based babbitt for long life. Both oil ring and pressure lubrication are available.

Anti-friction journal bearings also are available for quick-start applications or where oil mist lubrication systems are specified.



RLHA 24



For more information on **RLHA single-stage steam turbines**, contact our Worcester, MA Technology Center at:

Dresser-Rand

299 Lincoln Street
 Worcester, MA 01605
 Tel: 1-888-268-8726
 Fax: 508-595-1788

For a complete list of D-R products and services, visit us at www.dresser-rand.com or contact us at the following locations:

Dresser-Rand Corporate Headquarters

West8 Tower Suite 1000
 10205 Westheimer Road
 Houston, TX 77042 USA
 Tel: (Int'l +1) 713-354-6100
 Fax: (Int'l +1) 713-354-6110
 email: info@dresser-rand.com

112, Avenue Kleber
 75784 – Paris Cedex 16
 Tel: (Int'l +33) 156 26 71 71
 Fax: (Int'l +33) 156 26 71 72
 email: info@dresser-rand.com

Regional Headquarters

The Americas

Dresser-Rand
 West8 Tower Suite 1000
 10205 Westheimer Road
 Houston, TX 77042 USA
 Tel: (Int'l +1) 713-354-6100
 Fax: (Int'l +1) 713-354-6110

EMEA

(Europe, Middle East, Eurasia, Africa)
 Dresser-Rand S.A.
 31 Boulevard Winston Churchill
 Cedex 7013
 Le Havre 76080 France
 Tel: (Int'l +33) 2-35-25-5225
 Fax: (Int'l +33) 2-35-25-5366 / 5367

Asia-Pacific

Dresser-Rand Asia Pacific Sdn Bhd
 Unit 8-1, 8th Floor
 Bangunan Malaysian Re
 17 Lorong Dungun
 Damansara Heights
 50490 Kuala Lumpur, Malaysia
 Tel: (Int'l +60) 3-2093-6633
 Fax: (Int'l +60) 3-2093-2622

©2007 Dresser-Rand.

This document comprises a general overview of the products described herein. It is solely for informational purposes, does not represent a warranty or guarantee of the information contained herein and is not to be construed as an offer to sell or a solicitation to buy. Contact Dresser-Rand for detailed design and engineering information suitable to your specific applications. Dresser-Rand reserves the right to modify its products and related product information at any time without prior notice.

Split carbon ring steam sealing glands are readily accessible and easy to remove without disturbing other parts of the turbine.

Standard Features

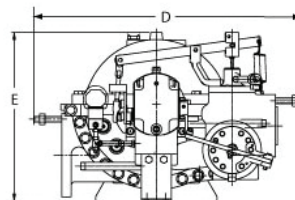
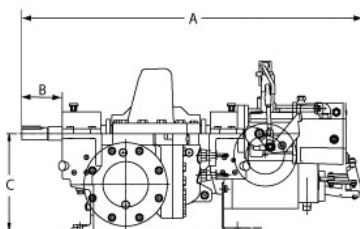
- Meets or exceeds API 611 requirements
- Direct drive, oil relay (Woodward TG Series) or NEMA Class A constant speed governor
- Overspeed mechanical trip and shut off system
- Manual speed changer
- Curtis type wheel
- Carbon ring sealing glands
- Built-in removable steam strainer
- Centerline support with vertical jacking screws
- Lagging-blanket insulation (API applications)

Optional Features

- NEMA Class D and variable speed governors
- Solenoid trips for remote shutdown
- High backpressure trip
- Forged steel wheels
- Manual nozzle hand valves
- Special and double shaft extensions
- Copper-free construction for corrosive atmosphere
- Pneumatic valve actuation
- High inlet and back pressure construction
- Labyrinth, carbon/labyrinth, mechanical and six carbon ring steam seal designs

Maximum Capabilities

Model	Power HP (kW)	Inlet Pressure PSIG ₁ (BARG)	Inlet Temp °F (°C)	Exhaust PSIG ₂ (BARG)	RPM	Inlet Dia. In (mm)	Exhaust Dia. In (mm)
RLHA-15	450 (335)	600 (41)	750 (400)	105 (7)	6000	3 (75)	6 (150)
RLHA-24	2500 (1865)	900 (62)	950 (510)	300 (20)	6300	6 (150)	10 (250)



Note: Steam inlet locations are fixed as illustrated. Steam exhaust locations available as right or left hand orientation.

Dimensions - in (mm)

	RLHA15	RLHA24
A	46 (1166)	57 (1454)
B	5 (136)	5 (136)
C	13 (324)	22 (552)
D	35.5 (902)	44 (1110)
E	22 (562)	42 (1075)

