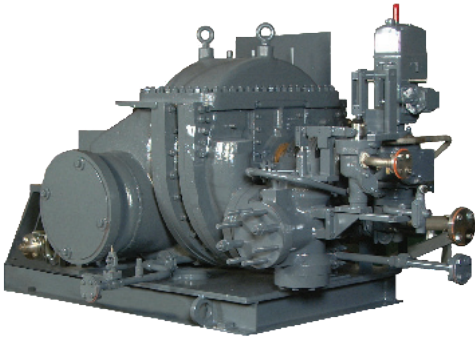


# Model U

## Multi-Stage Steam Turbine



The Dresser-Rand® Model U steam turbine was originally designed to meet the harsh environment of the sugar industry where sudden changes in steam conditions and loads are common. The time-tested Model U turbine continues to meet the most demanding mechanical drive needs for petroleum, petrochemical, sugar mills, steel mills, waste-to-energy plants and other process industries that require drivers for generators, pumps, compressors, fans, and blowers.

### Casing Design

The unique above-centerline casing split allows the cover of the Model U turbine to be removed for rotor and diaphragm inspection without disturbing the steam sealing areas, or the inlet and exhaust connections. This design also allows 270 degrees of admission from a single steam chest without a high-pressure horizontal joint.

### Inlet Valves

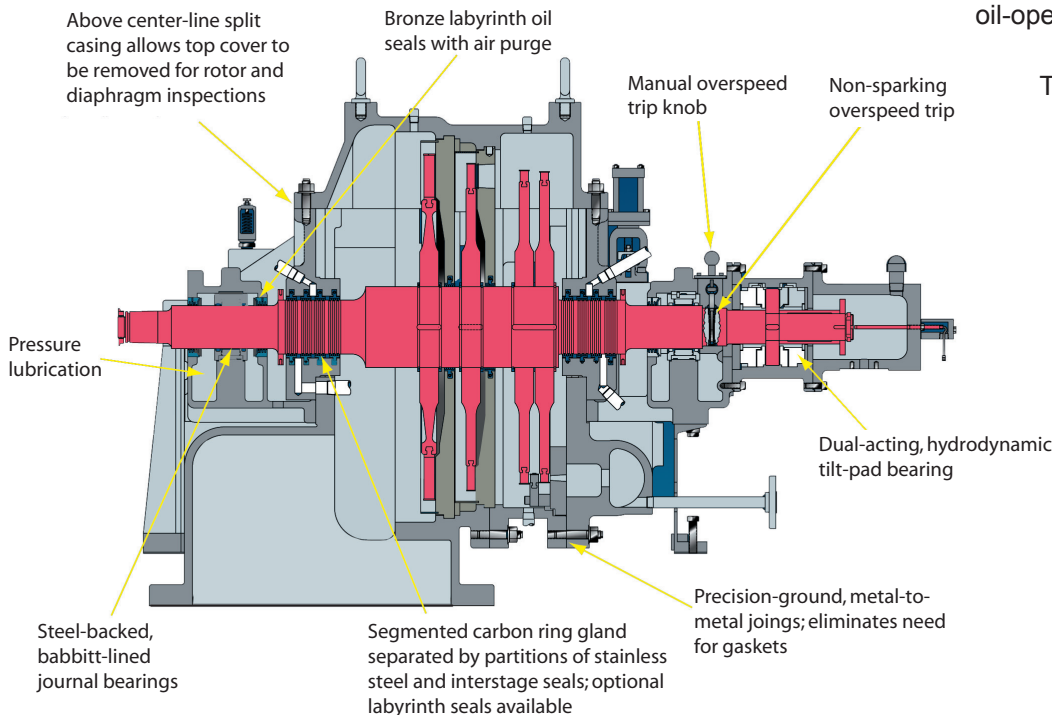
The Model U turbine is designed with a single inlet valve with optional manual hand valves for steam flow control, and a wide selection of optional governors and accessories.

### Overspeed Trip System

The overspeed trip system is a mechanical bolt action, non-sparking system operating an independent trip valve. A two-out-of-three electronic system with dual solenoid activation is available as needed.

The independent trip valve can be a high-performance butterfly valve, or a Dresser-Rand mechanical latch, or a Gimpel™ oil-operated trip and throttle valve.

These valve types provide quick-close, positive shut-off of the steam supply and comply with API 612 standards. The trip and throttle valve can function as a manually operated throttle valve for turbine start-up or shut-down.



For more information on **Model U steam turbines** contact one of the following locations:

**Dresser-Rand**  
P.O. Box 967  
Burlington, Iowa 52601  
Tel: 1-888-614-9168  
Fax: 319-752-1616

**Dresser-Rand**  
PO Box 102031  
D-33520  
Bielefeld, Germany  
Tel: 49 521 1085-0  
Fax: 49 521 1085-199

**Dresser-Rand**  
37 Coats St. - PO Box 592  
Wellsville, NY 14895  
Tel: 1-800-828-2818  
Fax: 585-593-5815

For a complete list of D-R products and services, visit us at [www.dresser-rand.com](http://www.dresser-rand.com) or contact us at the following locations:

**Dresser-Rand Corporate Headquarters**

West8 Tower Suite 1000  
10205 Westheimer Road  
Houston, TX 77042 USA  
Tel: (Int'l +1) 713-354-6100  
Fax: (Int'l +1) 713-354-6110  
email: [info@dresser-rand.com](mailto:info@dresser-rand.com)

112, Avenue Kleber  
75784 – Paris Cedex 16  
Tel: (Int'l +33) 156 26 71 71  
Fax: (Int'l +33) 156 26 71 72  
email: [info@dresser-rand.com](mailto:info@dresser-rand.com)

**Regional Headquarters**

**The Americas**  
Dresser-Rand  
West8 Tower Suite 1000  
10205 Westheimer Road  
Houston, TX 77042 USA  
Tel: (Int'l +1) 713-354-6100  
Fax: (Int'l +1) 713-354-6110

**EMEA**  
(Europe, Middle East, Eurasia, Africa)  
Dresser-Rand S.A.  
31 Boulevard Winston Churchill  
Cedex 7013  
Le Havre 76080 France  
Tel: (Int'l +33) 2-35-25-5225  
Fax: (Int'l +33) 2-35-25-5366 / 5367

**Asia-Pacific**  
Dresser-Rand Asia Pacific Sdn Bhd  
Unit 8-1, 8th Floor  
Bangunan Malaysian Re  
17 Lorong Dungun  
Damansara Heights  
50490 Kuala Lumpur, Malaysia  
Tel: (Int'l +60) 3-2093-6633  
Fax: (Int'l +60) 3-2093-2622

**Governors**

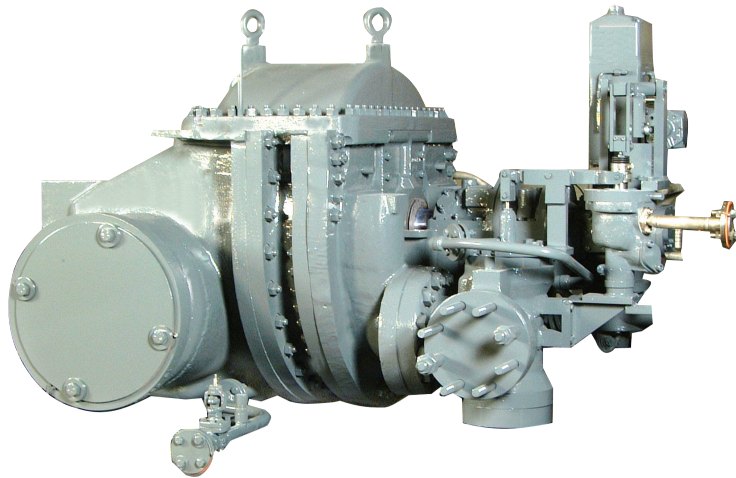
The Model U turbine is typically supplied with the Woodward Peak 150 governor control system. It provides tight control of speed (NEMA D) and includes an input for a 4-20 mA remote speed control signal that can be used for a process-generated input to control the speed setting. Other features include dual-speed control dynamics and overspeed trip test capabilities.

**Rotors, Seals, and Bearings**

Rotors are available in forged or built-up or integral design with flexible or stiff shaft for up to 10 stages. Segmented, carbon-ring gland steam seals separated with partitions of stainless steel and inter-stage seals are standard. Labyrinth gland seals are also available to accommodate operating conditions or client preference.

Bronze, labyrinth-type oil seals retain pressure-fed lubrication in the bearing housings and prevent contamination from foreign materials.

The Model U turbine incorporates dual acting, hydrodynamic tilting pad thrust bearings to position the rotor axially and absorb internal thrust. Spherically seated or tilting pad-type journal bearings are standard.



**Specifications**

Model	Power HP (kW)	Inlet Pressure psig, (bar)	Inlet Temp °F (°C)	Exhaust psig, (bar)	RPM
U	8050 (6000kW)	650 (45)	850 (454)	200 (14)	10,000
	Inlet Diameter In (mm)	Exhaust Diameter In (mm)	Stages	Casing Design	Inlet Options
	10 (250)	36 (900)	10	Horizontally split	Hand valve

©2007 Dresser-Rand. This document comprises a general overview of the products described herein. It is solely for informational purposes, does not represent a warranty or guarantee of the information contained herein and is not to be construed as an offer to sell or a solicitation to buy. Contact Dresser-Rand for detailed design and engineering information suitable to your specific applications. Dresser-Rand reserves the right to modify its products and related product information at any time without prior notice. Form 2152